

Show Presenter Help

User guide

Table of Contents

Show Presenter Help	3
Getting Started with Show Presenter	4
Initial Startup	5
Import	6
Pacemaker Plugin Configuration	7
Screen Resolution	8
Winamp Audio Output	9
Winamp Install	11
User Interface	19
Main Screen	20
Add Song to Queue	25
Options Screen	26
Import Screen	29
Register Screen	31
Ordering	32
Copyright & Trademark Information	33
Contact Digital Entertainer Limited	34

Show Presenter Help

Show Presenter Overview

Getting Started with Show Presenter

Initial Startup

Initial Startup:

Before you can do anything within Show Presenter you need to [import](#) your karaoke songs, this is done using the [import](#) screen after clicking the options button on the front screen.

Import

Importing Your Songs:

The import routine will search the folder you select and all subfolders beneath that folder.

i.e

If you have your songs in folder F:\Karaoke

And have subfolders

F:\Karaoke\SD Karaoke\SD001

F:\Karaoke\SD Karaoke\SD002

F:\Karaoke\SD Karaoke\SD003

Importing F:\Karaoke will import all the folders.

Files with an extension mp3 with no matching .cdg will be imported as audio files and will still be searchable.

Clicking the [Clear](#) database button will clear any songs imported and reimport from scratch.

NB:

- 1: Importing does not move or copy any files, it just indexes the files current location, any rename actions performed on files after will not be shown in the search results until you clear the database and reimport.**
- 2: If you have deleted any songs from your file system the songs will remain in the search results until you reimport using the clear option.**

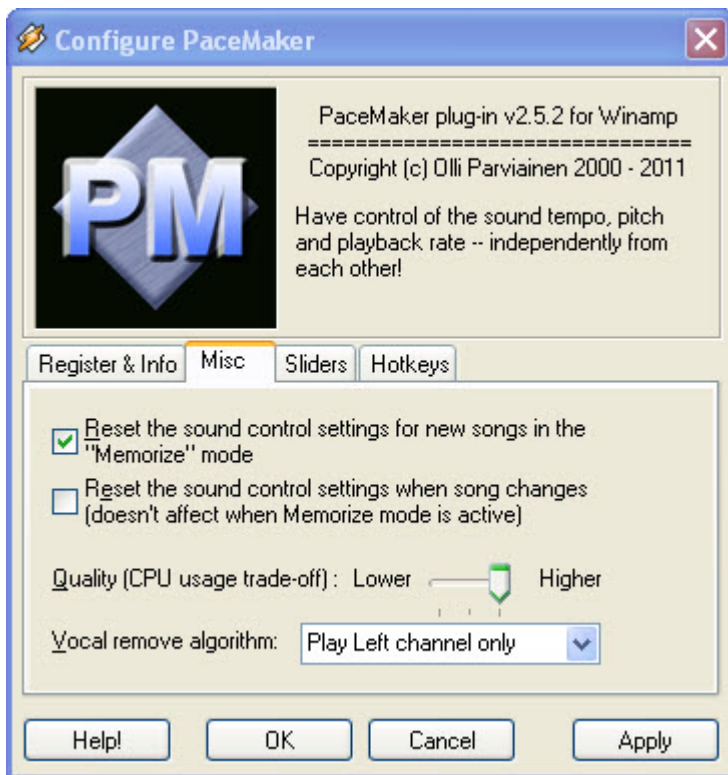
Pacemaker Plugin Configuration

The pacemaker plugin is used to allow the key of songs to be changed and also to remove vocals from multiplex tracks.

To configure pacemaker to remove vocals from multiplex songs you click the small spanner icon on the pacemaker front interface



On the Configure Pacemaker screen you select the Misc Tab and make sure that Play Left Channel Only is selected from the dropdown.



If you are using EasyKJ for commercial purposes Pacemaker needs to be registered

Screen Resolution

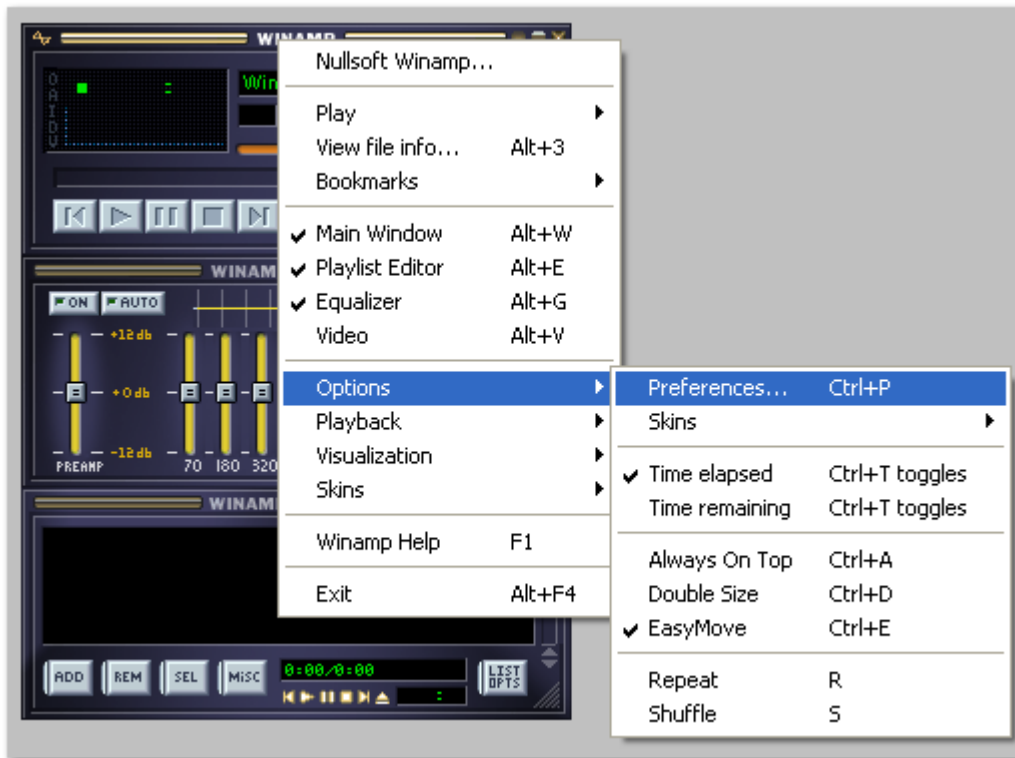
Show Presenter will not run unless your screen resolution is 1024 x 768 or above at 96dpi.

Please click the link below for instructions on doing this.

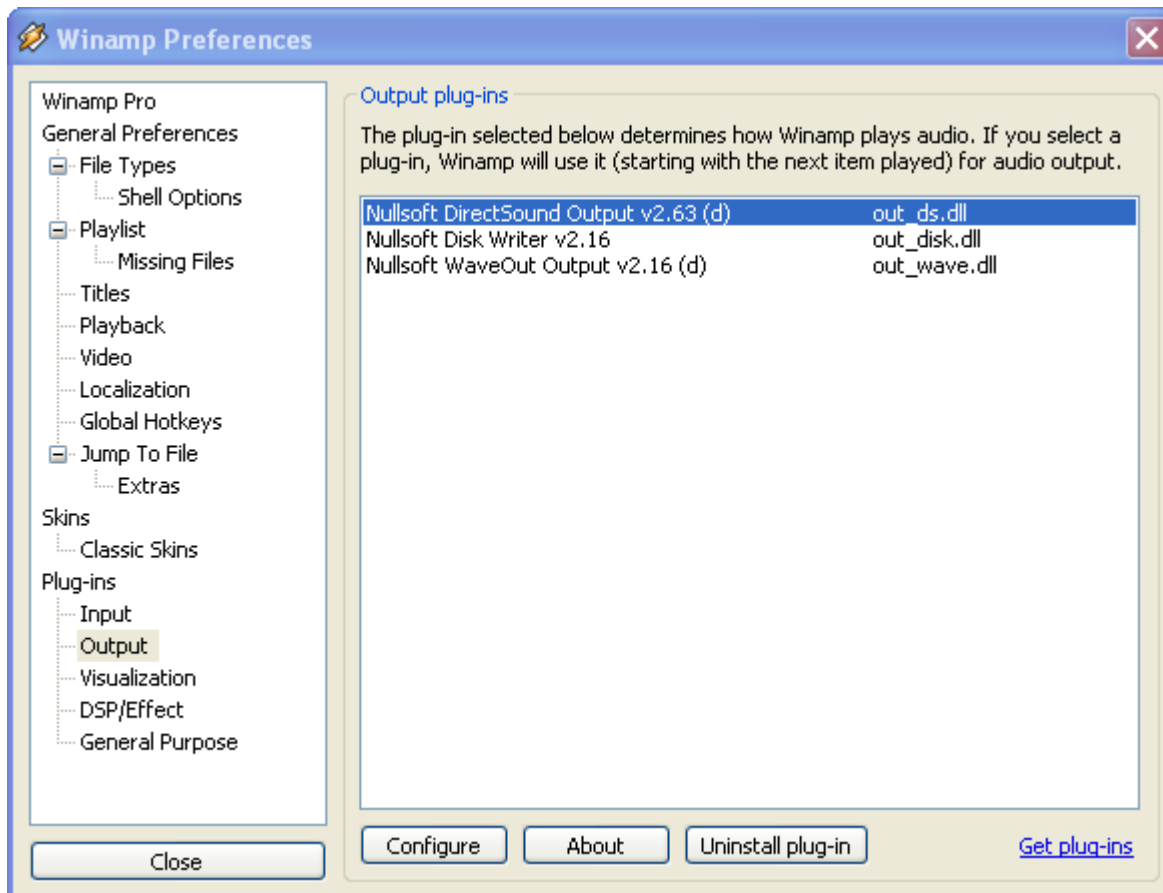
[Screen resolution change](#)

Winamp Audio Output

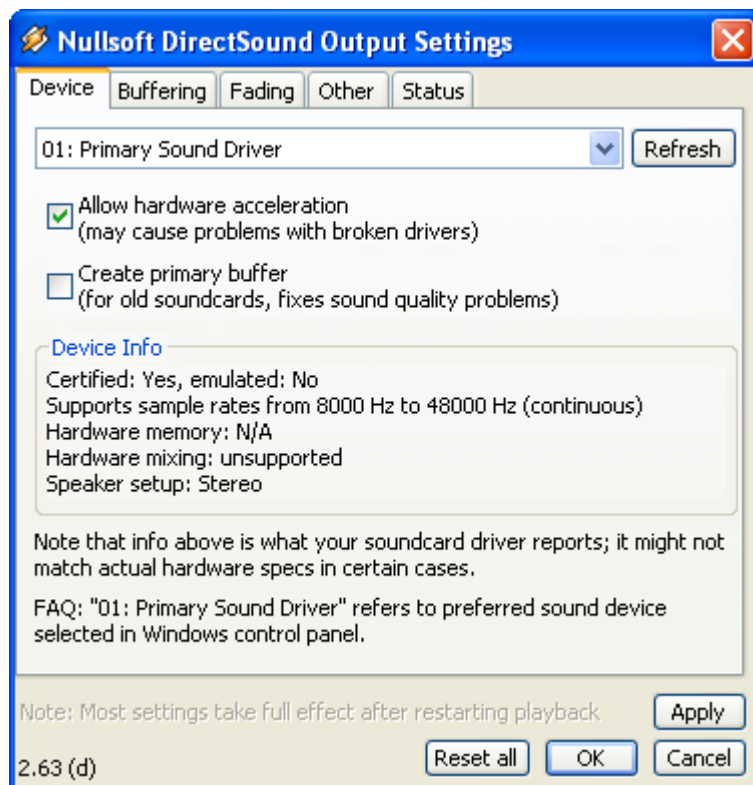
Open Winamp preferences by right clicking the winamp toolbar.



Select Plugins/Output



From the dropdown list select the audio output you want winamp to play out off and click Apply



Winamp Install

Here are the steps to installing Winamp(R) so that the lyrics plugin can write back its last position.

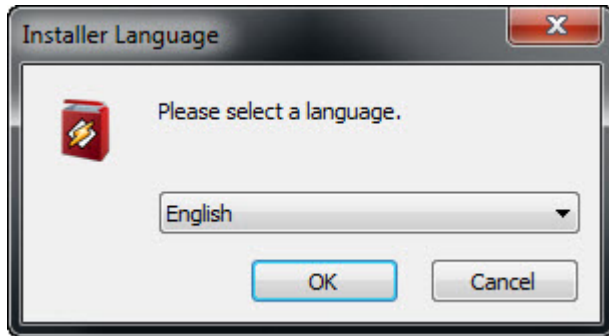
If you install winamp to its default location of C:\Program Files or C:\Program Files(x86) on Vista, Windows 7 Windows 8 and Windows 8.1 then the lyrics screen will reset its position each time you start Show Presenter.

This saves having to place the lyrics screen each time you start Show Presenter.

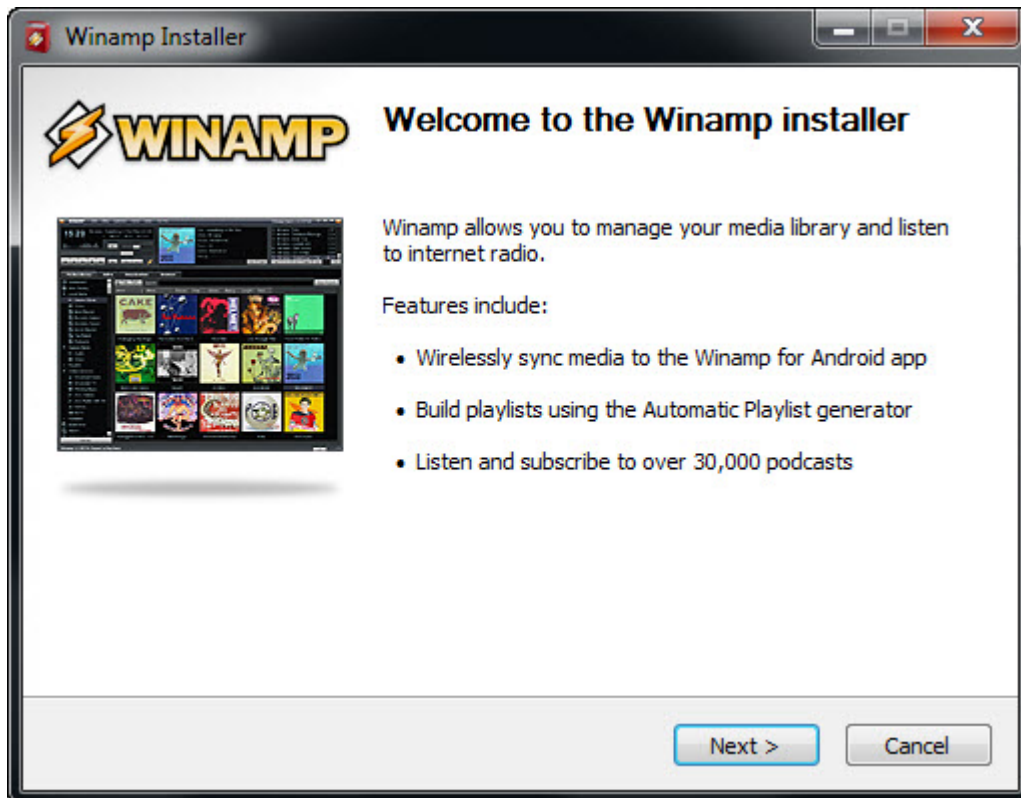
These instructions assume you have already downloaded the latest Winamp (Lite) version [linked](#) from the downloads page of our website.

If you are installing a different version of Winamp than lite then there may be other screens but these are not displayed here.

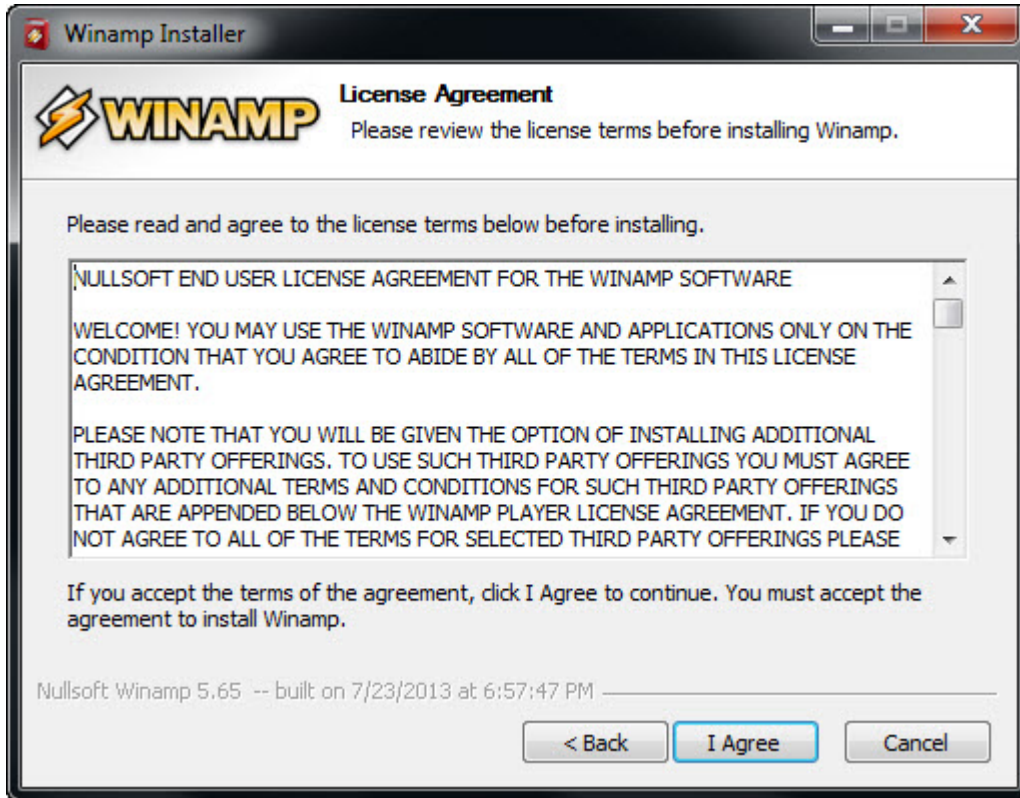
Run the downloaded installer.



Click **OK**



Click **Next**

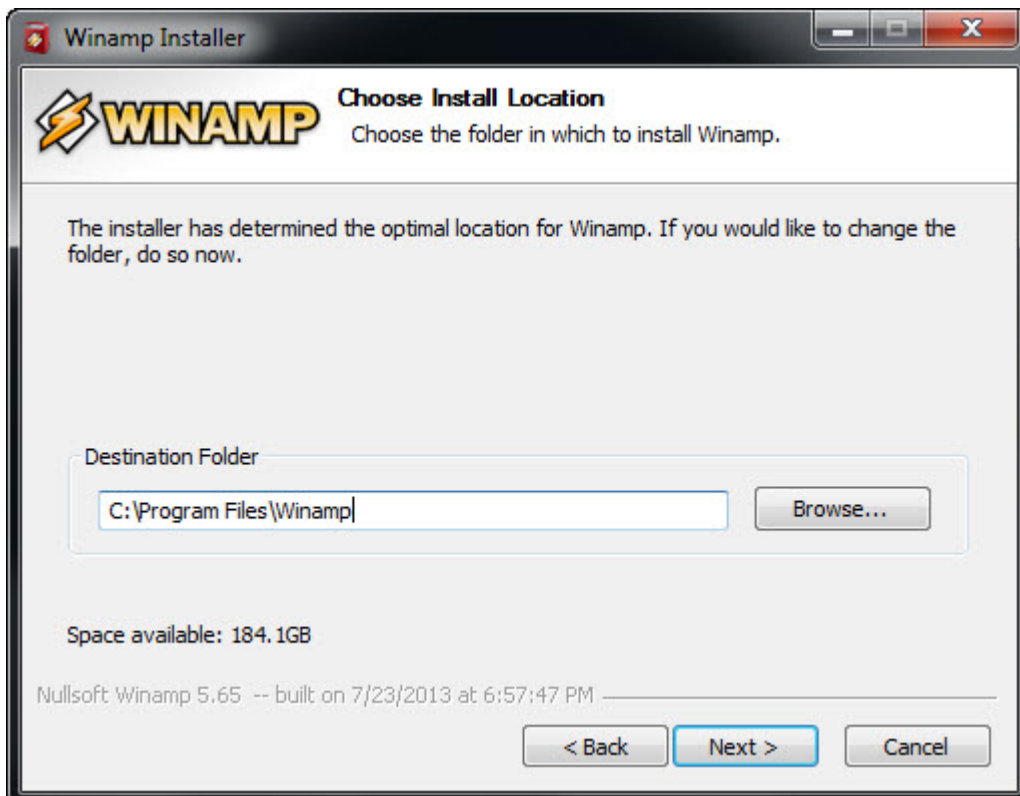


Read the license agreement and if you accept the terms then click **I Agree**

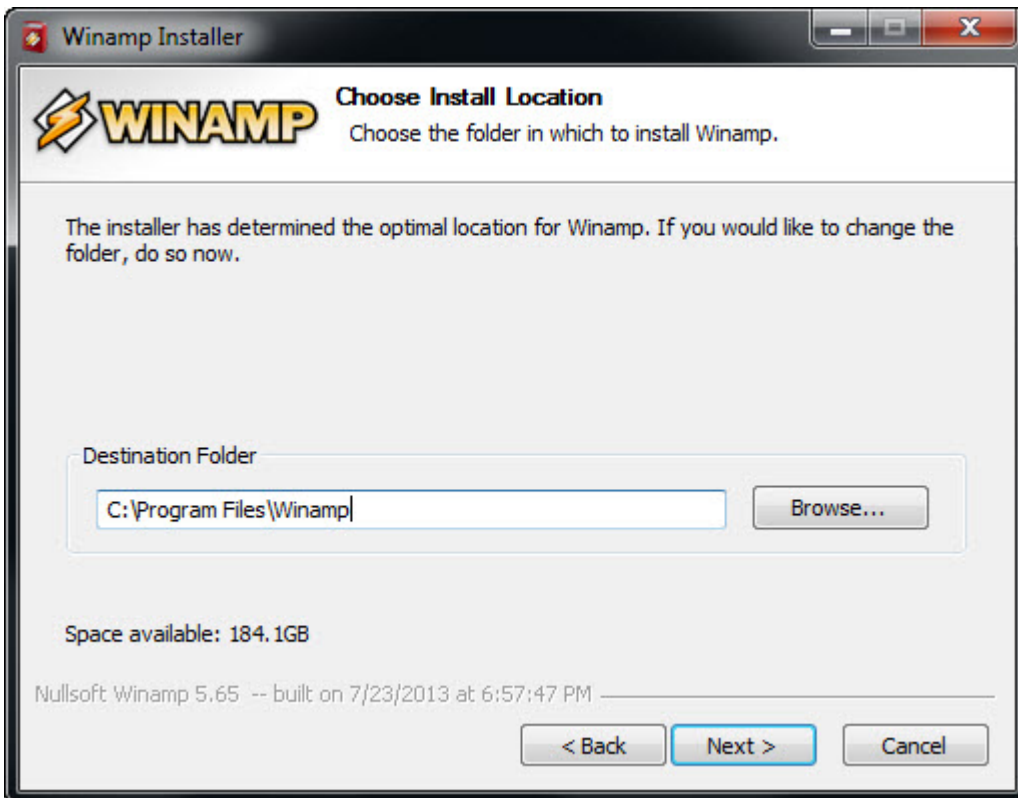
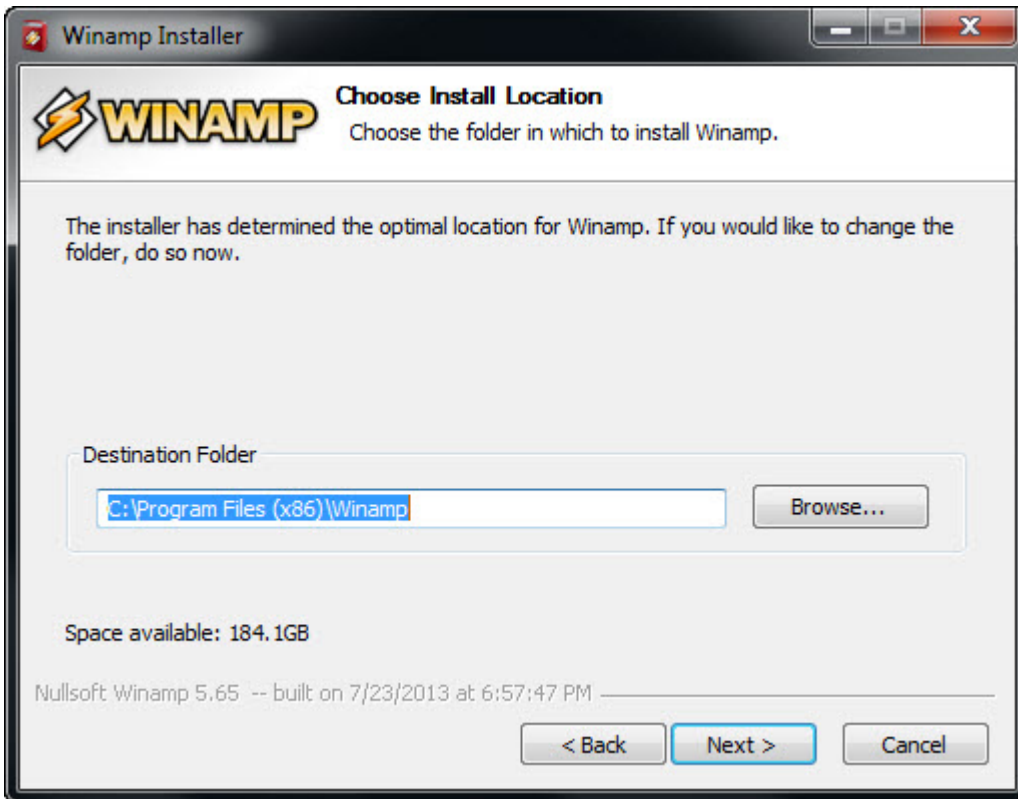
Here is where you have choices depending on your operating system

Windows XP

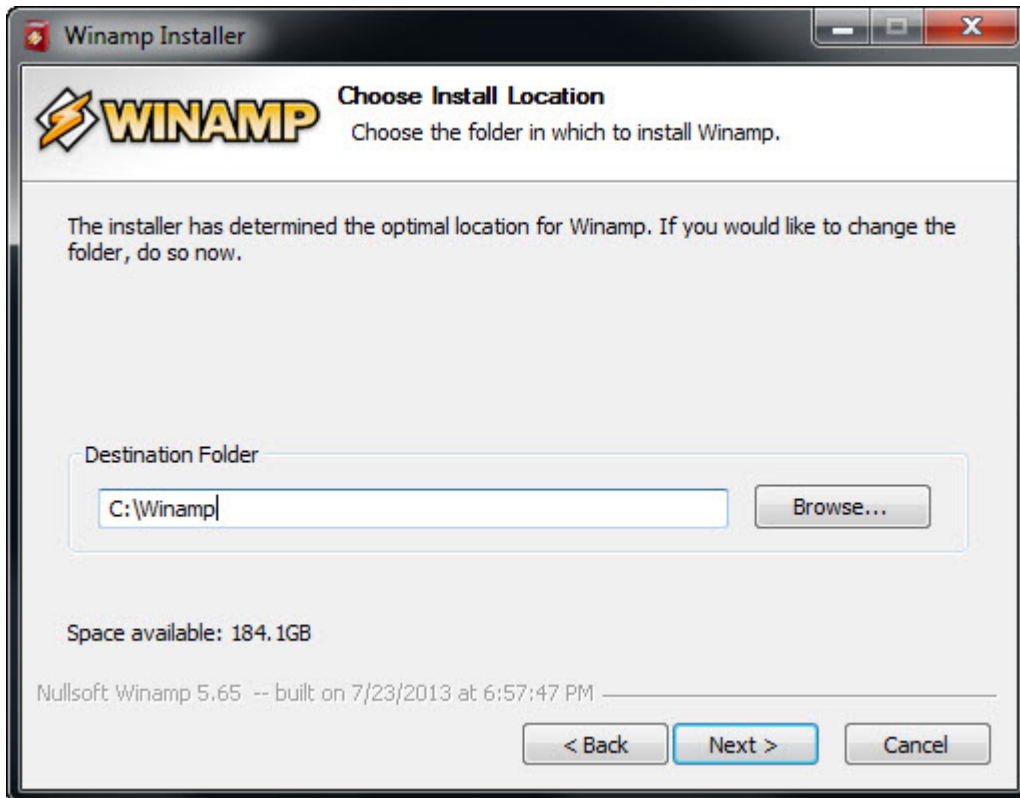
Leave the path alone as below



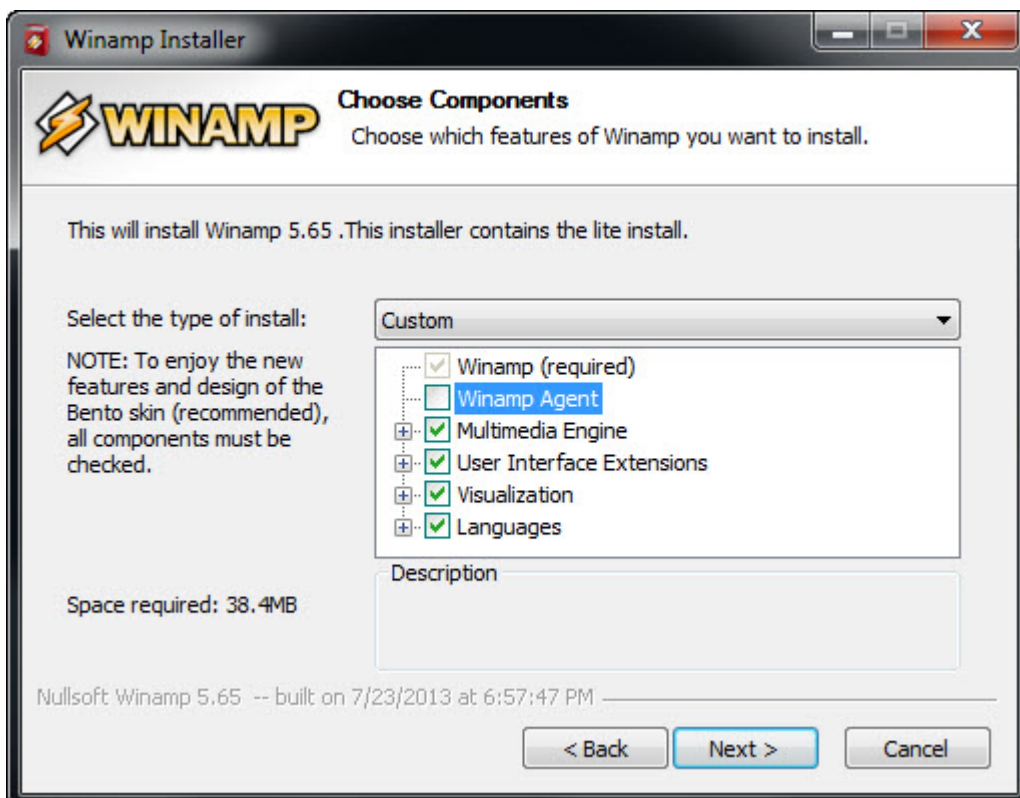
Windows Vista, Windows 7, Windows 8 and Windows 8.1 (32 bit or 64 bit screens shown below)



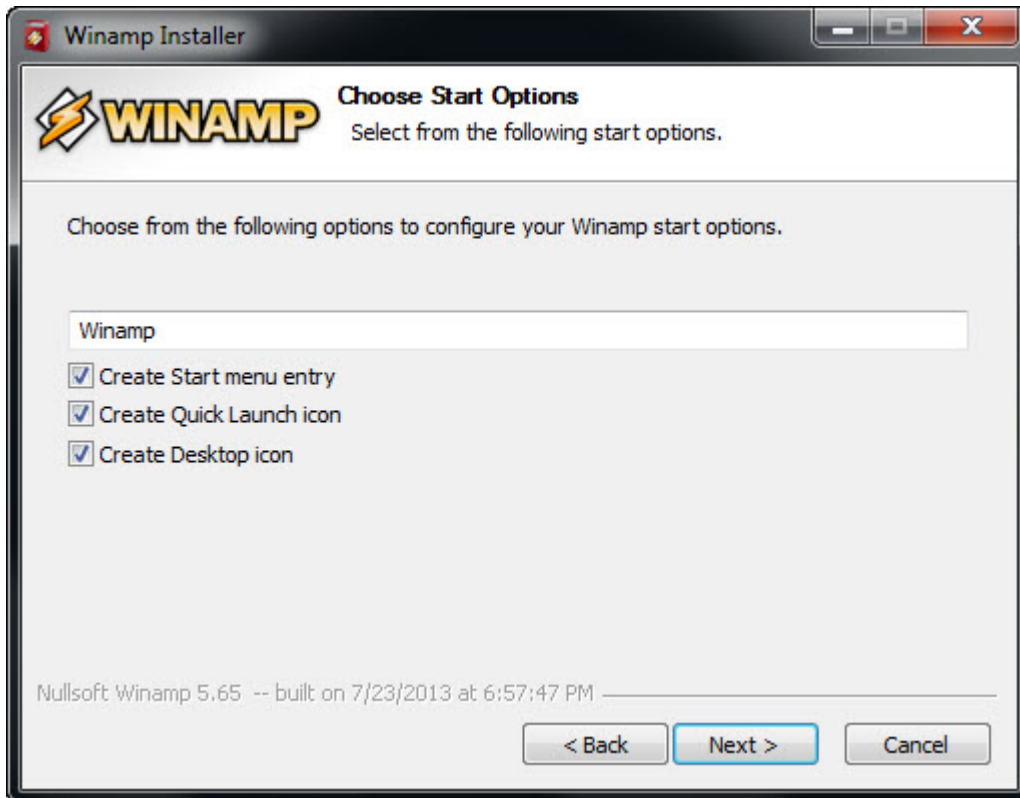
Change the path to the same as below.



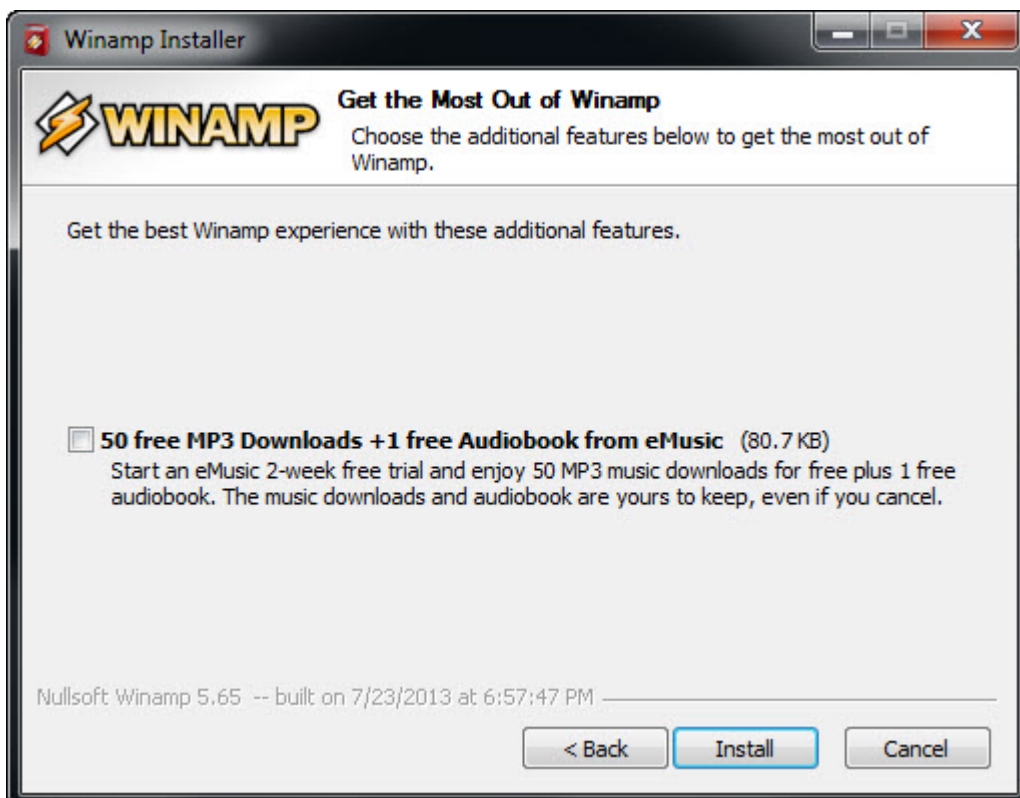
Click **Next**



Deselect Winamp Agent (If you want to) and click **Next**



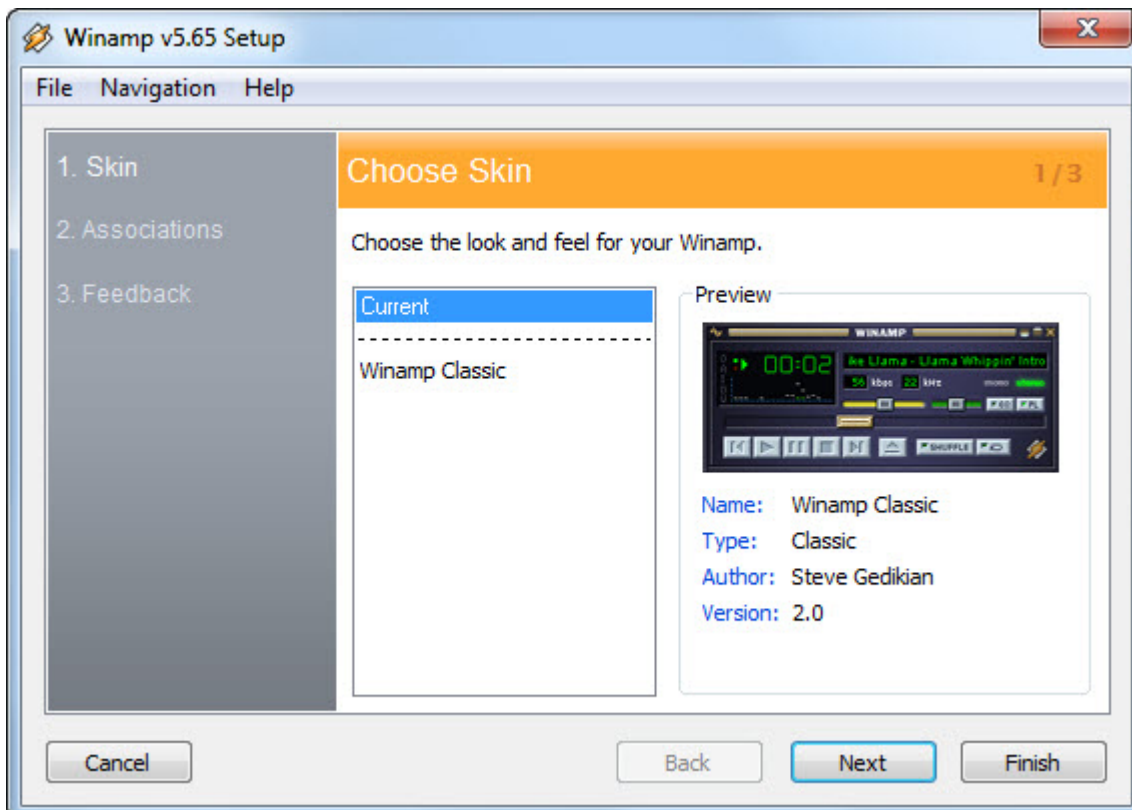
click **Next**



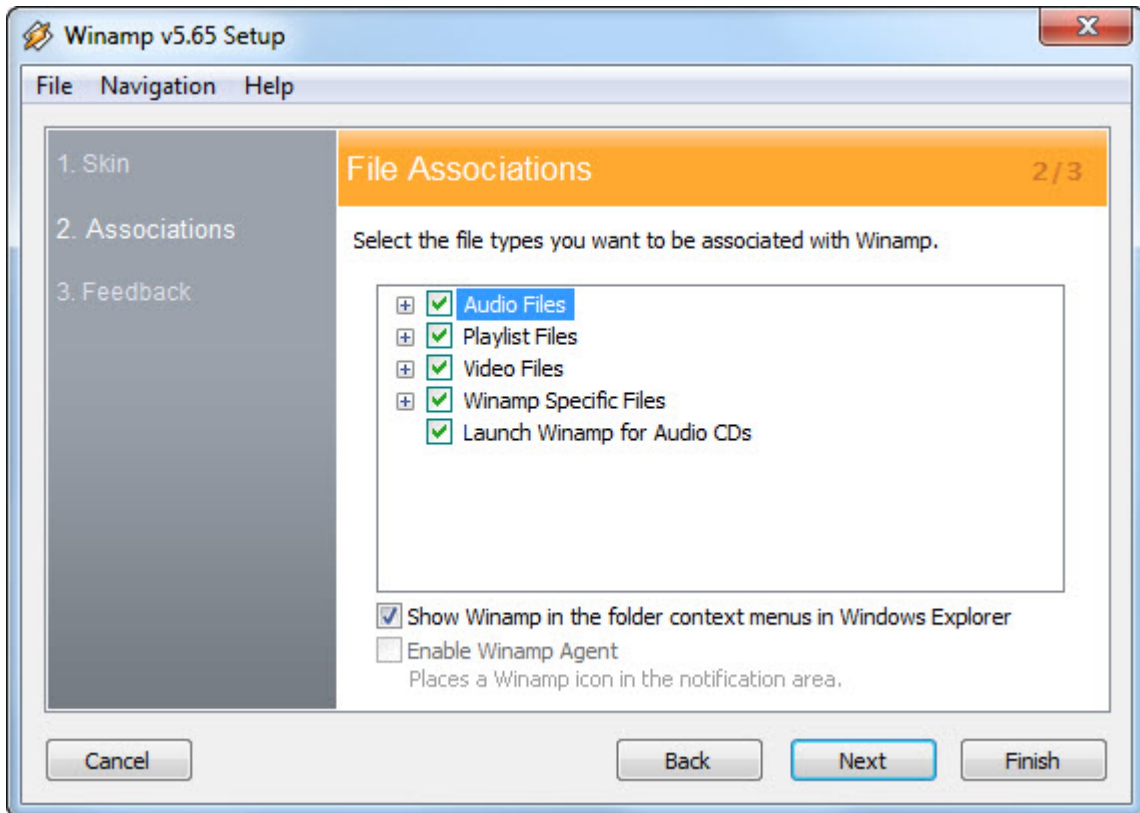
Deselect 50 free MP3 Downloads (If you want to) and click **Install**



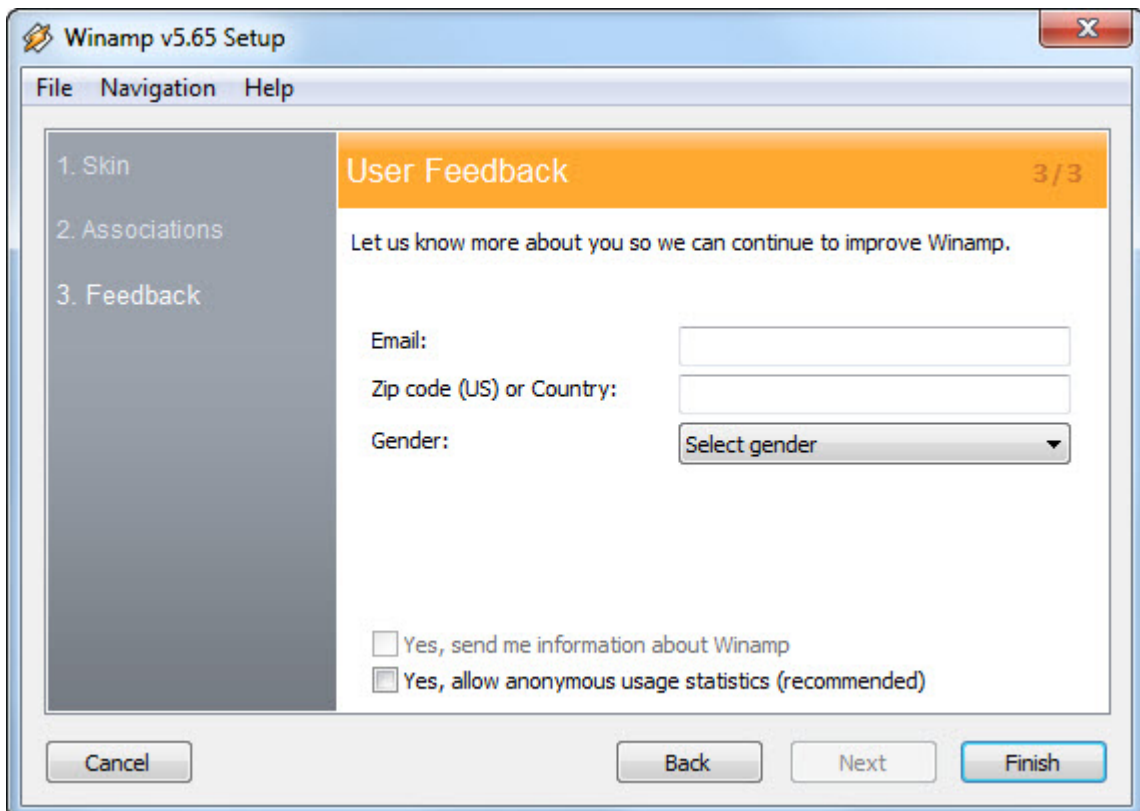
Leave Launch Winamp ticked and click **Finish**



click **Next**



click **Next**



click **Finish**

You may now hear the standard audio played by winamp.

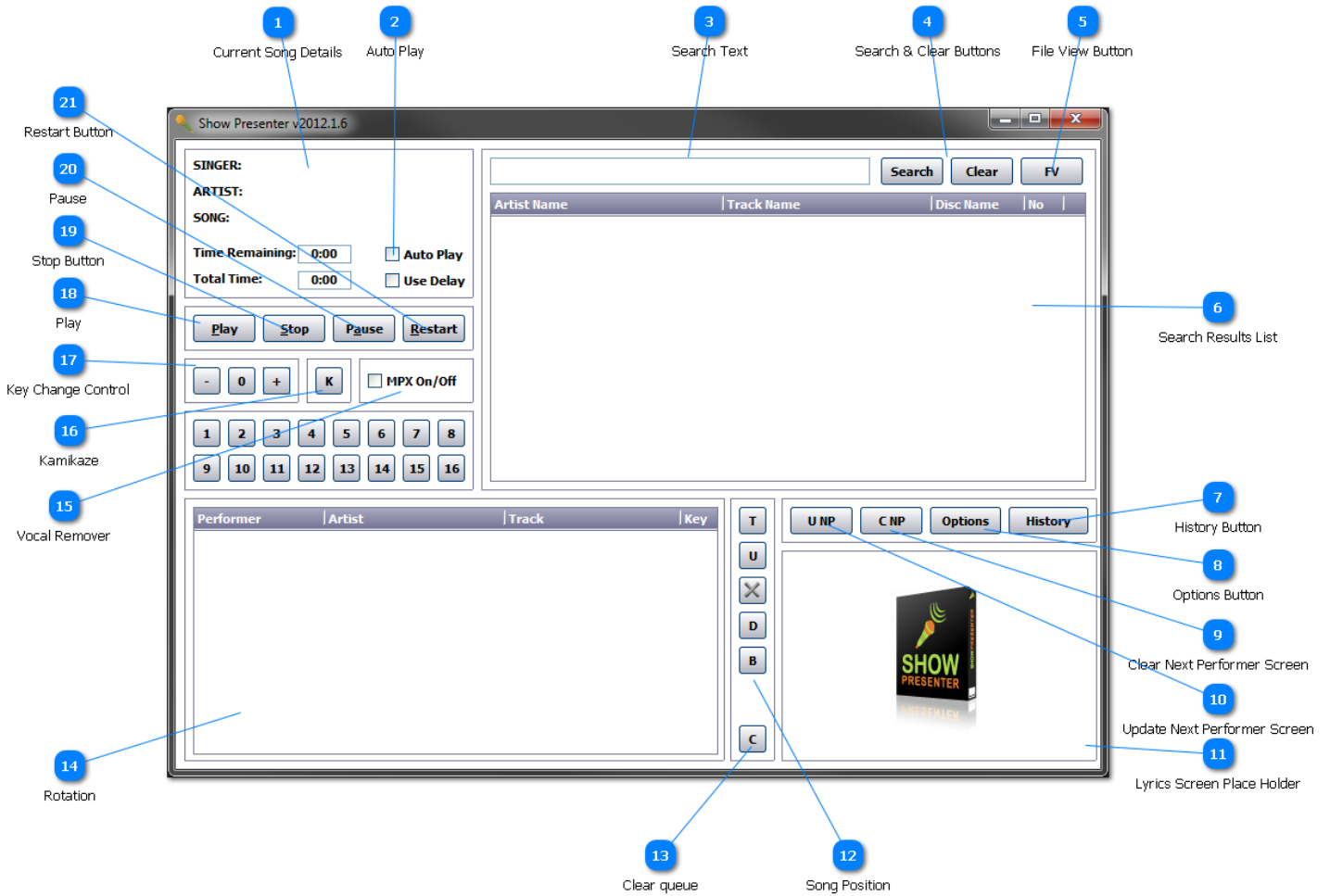
Close Winamp and install the plugins leaving the install path of the plugins as default as they will take the correct path. If windows tells you that they didnt install correctly choose **Ignore**

Winamp(R) is a registered trademark of AOL, Inc.

User Interface

Instructions on the user interface of Show Presenter are in the sections below.

Main Screen



1 Current Song Details

SINGER:
ARTIST:
SONG:

Time Remaining: **Auto Play**
Total Time: **Use Delay**

2 Auto Play

Auto Play
 Use Delay

Selecting this will play the song at the top of the song list with no break between tracks.

3 Search Text

Enter search criteria here.

Selecting interactive search in the [Options Screen](#) will return search results on every character you type over 4.

Pressing the Esc key while this field will clear the field

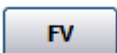
4 Search & Clear Buttons



Clicking here will search all imported karaoke songs unless the [music](#) checkbox is selected, whereby all music file will be searched.

The search will be based upon the search criteria entered in the search text box.

5 File View Button



Opens the open file dialog box for manual loading of a single file from your file system..

6 Search Results List

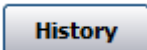
Artist Name	Track Name	Disc Name	No
-------------	------------	-----------	----

Depending on what is selected under the options screen determines the behaviour when a song is double clicked in the search results.

When a song is double clicked in search results the add song to queue dialog is shown or the song is added to the queue depending on what option is selected in the options screen.

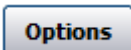
Right Clicking an individual item in the search results will bring up a popup menu.

7 History Button



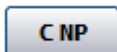
Opens the song history screen.

8 Options Button



Opens the Options Screen.

9 Clear Next Performer Screen



Clears the next performer s

roller

10 Update Next Performer Screen

U NP

Updates the next performer screen scroller with the details of the selection in the queue.

11 Lyrics Screen Place Holder



An area where you can drag the second lyrics screen over.

12 Song Position

T

U



D

B

Controls the selected songs position in the queue.

13 Clear queue

C

Clears all singers and their songs from the queue.

14 Rotation

Performer	Artist	Track	Key

List of people currently in the queue to sing.

This list contains the singers name and the songs they have requested and the key change details.

15

Vocal Remover



The use of the [multiplex](#) button to remove the vocals from multiplex tracks while using Winamp(R) requires the installation of the pacemaker plugin.

16

Kamikaze



Chooses a random song to be sung.

17

Key Change Control



The use of the keychange buttons while using Winamp(R) requires the installation of the pacemaker plugin

18

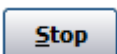
Play



Play the currently selected song in the [rotation song list](#)

19

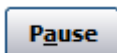
Stop Button



Stops the currently playing Song

20

Pause



Pauses the currently playing song.

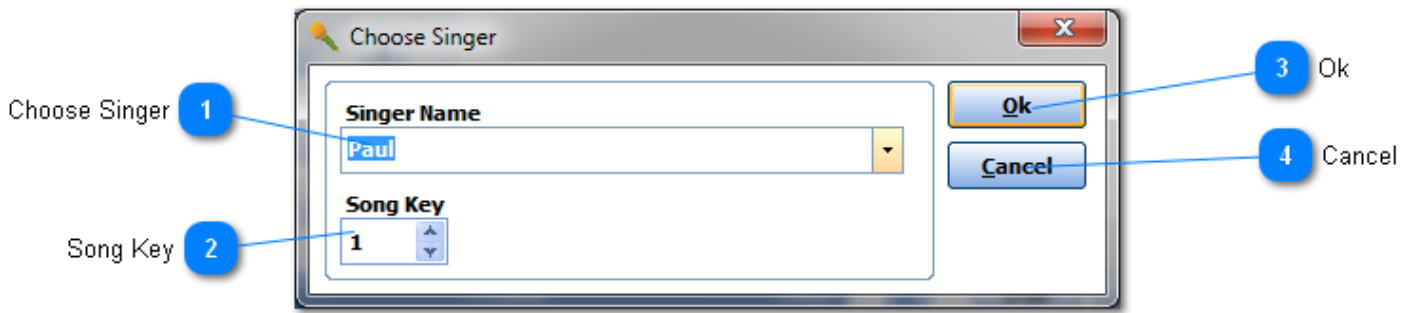
21

Restart Button

A rectangular button with a light gray background and a thin black border. The word "Restart" is written in a bold, black, sans-serif font, centered within the button.

Restarts the currently playing song.

Add Song to Queue



1 Choose Singer

Singer Name

Choose a singer from the dropdown or type a new singer name.

2 Song Key

Song Key

Select the key change steps you would like the song to be changed to.

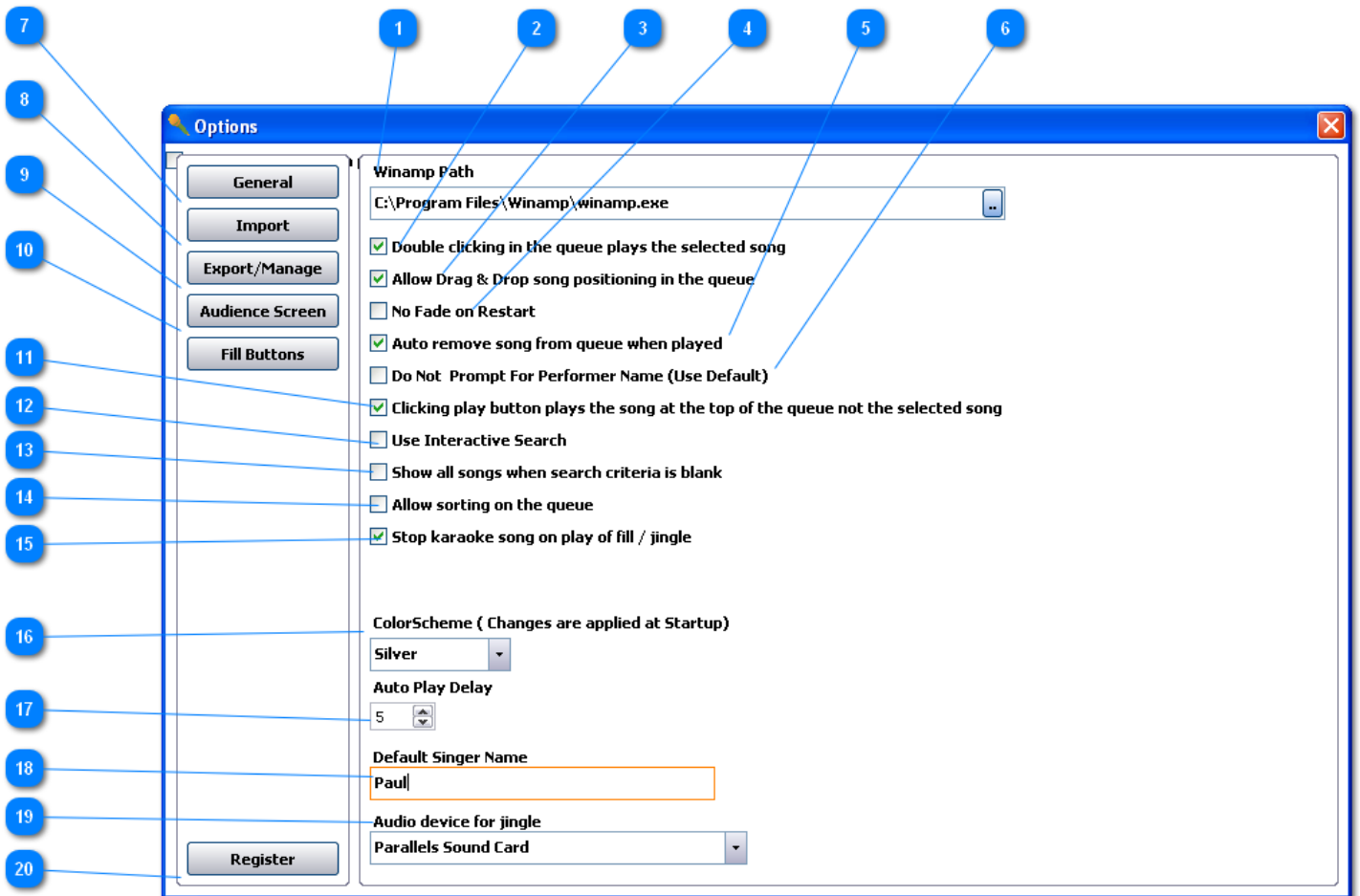
3 Ok

Add the song to the queue.

4 Cancel

Close the screen without adding the song to the queue.

Options Screen



1

Winamp Path

C:\Program Files\Winamp\winamp.exe

This path should be automatically detected so leave alone unless you have installed winamp in multiple locations.

2

Double clicking in the queue plays the selected song

When this is on double clicking a song in the queue plays the song that was double clicked.

3

Allow Drag & Drop song positioning in the queue

When selected allows you to drag and drop songs in the queue to the order you want to play them.

4

No Fade on Restart

When restart is click set whether you want the karaoke song to fade out. This does not work on fill / jingles playing

5

Auto remove song from queue when played

Removes the playing song from the queue as soon as the song starts

Must be on for autoplay to function

6 **Do Not Prompt For Performer Name (Use Default)**

When selected no screen to select a singer will show when you select a song from search the search results.

7 **Import**

Opens the import screen

8 **Export/Manage**

Opens the export / manage screen.

9 **Audience Screen**

Open the audience screen options

10 **Fill Buttons**

Opens the screen to configure the jingle / fill buttons on the front screen.

11 **Clicking play button plays the song at the top of the queue not the selected song**

When selected, when you click the play button the top song in the queue plays rather than the selected song.

12 **Use Interactive Search**

Turn on to search your songs as you type each letter.
Turn off if search performance is degraded or audio glitches while searching.

13 **Show all songs when search criteria is blank**

Turn on to fully populate the search results even when no search criteria is entered.
Turn off if search performance is degraded.

14 **Allow sorting on the queue**

Allows you to sort the queue by clicking the queue header

15 **Stop karaoke song on play of fill / jingle**

Sets whether you want the karaoke to stop upon play of a fill / jingle.

16 **ColorScheme (Changes are applied at Startup)**

Silver ▼

17 Auto Play Delay

Set the delay between songs when auto play is seleted on front interface.
This has no effect unless autoplay is on and autoremove from queue above is also on

18

Default Singer Name

Sets the default singer name to be auto filled in the select singer screen when Do not prompt for performer is on.

19

Audio device for jingle

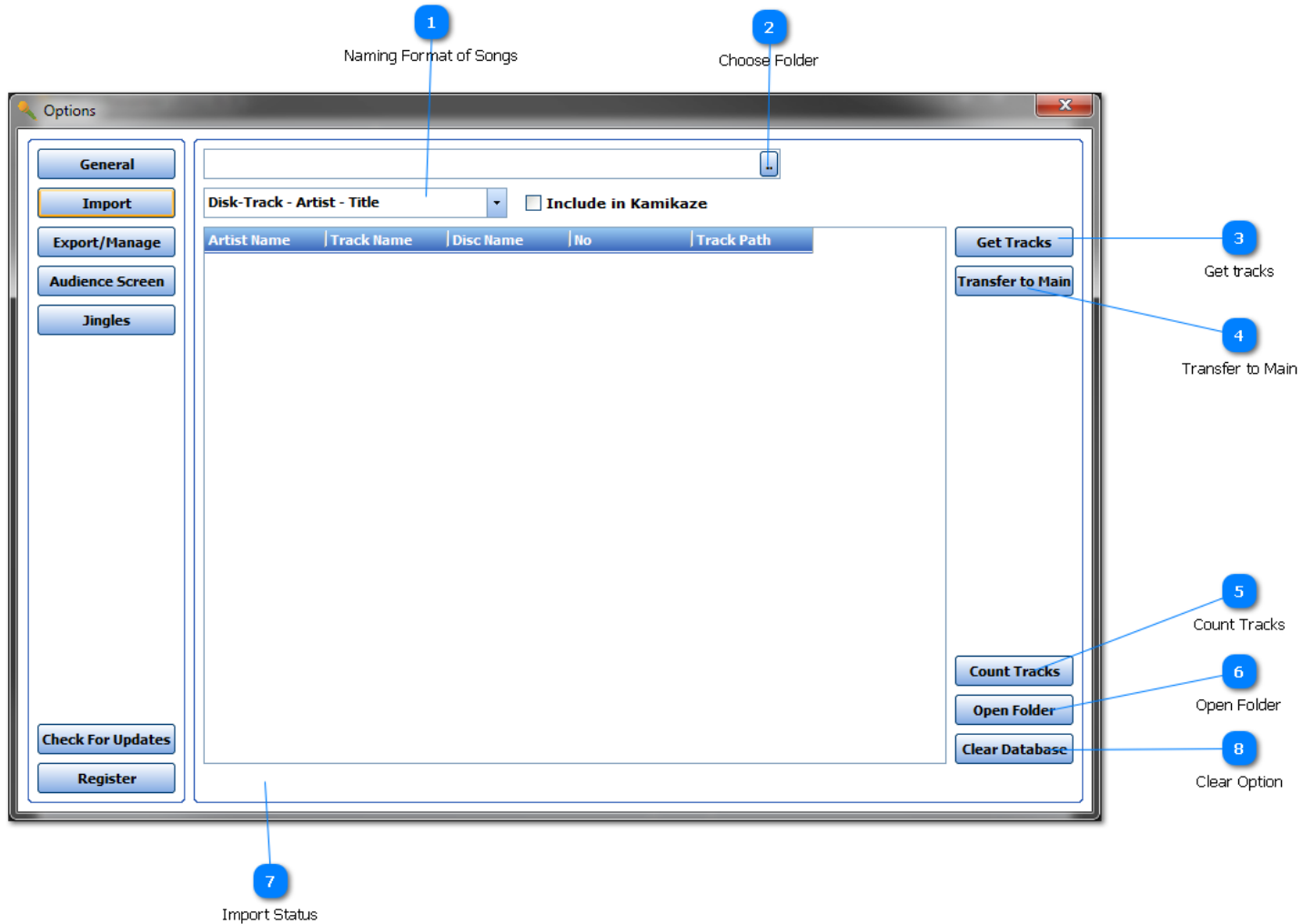
Select the audio device you want the jingles / fill to be played out off.

20

Register

Opens the registration screen.

Import Screen



1 Naming Format of Songs



Choose the format that your songs are named in.

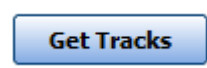
N.B Show Presetner is not intelligent, you have to tell it how your files are named. If your files are not named in a consistent way then the import may bring up errors due to the positioning of the - in your file names.

2 Choose Folder



Click the button with ... and then select the folder which you would like to import (the import will import all subfolders)

3 Get tracks



After selecting the folder, track format, clicking this will start the import routine. the status of the import will be shown at the bottom of the screen.

4 **Transfer to Main**

Transfer to Main

Transfers all tracks imported to the database.

5 **Count Tracks**

Count Tracks

Displays a count of the songs in the database.

6 **Open Folder**

Open Folder

Opens the Show Presenter Data Folder.

7 **Import Status**

While importing, any status changes will be displayed here.

8 **Clear Option**

Clear Database

Clears all imported songs and start with a fresh database.

Register Screen

The screenshot shows a dialog box titled "Internet Registration" with a close button in the top right corner. It contains two input fields: "Order No" and "Email Address". Below the fields is a red heading "Please Read Below" followed by a paragraph of text. At the bottom are three buttons: "Purchase", "Register", and "Cancel". Five blue callout circles with numbers 1 through 5 point to the "Order No" field, "Email Address" field, "Purchase" button, "Register" button, and "Cancel" button respectively.

1 Order No

Order No

Enter the order no that was included in the email sent after purchase.

2 Email Address

Email Address

Enter the Email address that was used to purchase.

3 Purchase

Purchase

Open the purchase page of our website.

4 Register

Register

Registers Show Presenter using the details entered in the fields above.

5 Cancel

Cancel

Closes the register screen.

Ordering

Ordering Show Presenter

The free demo allows you full use of the software without registration. After the demo has expired you need to order Show Presenter from the website <http://www.sax-n-dotty.co.uk> where your payment can be processed securely.

Show Presenter is licensed on a per computer basis with discounts available for purchases of multiple copies.

Copyright & Trademark Information

Copyright Information:

™MP3+G is a registered trademark of TriceraSoft and is used under license by Digital Entertainer Limited
Winamp(R) is a registered trademark of AOL, Inc.

Contact Digital Entertainer Limited

Contacting Digital Entertainer Limited:

Product Website:

You may find additional on the Show Presenter website: <http://www.sax-n-dotty.co.uk>

Email:

Show Presenter Technical Support: [Click here to email](#)