



## ***Paphiopedilum notatisepalum*, a new species of slipper orchid (Cypripedioideae, Orchidaceae) from China based on morphological and DNA evidence**

MEINA WANG<sup>1,2</sup>, SI-REN LAN<sup>1</sup> & ZHONG-JIAN LIU<sup>1,2</sup>

<sup>1</sup>College of Art, College of Landscape Architecture, Fujian Agricultural and Forestry University, Fuzhou 350002, China;

E-mail (S.-R. Lan): [lkzx@fafu.edu.cn](mailto:lkzx@fafu.edu.cn)

<sup>2</sup>Shenzhen Key Laboratory for Orchid Conservation and Utilization, The National Orchid Conservation Center of China and The Orchid Conservation & Research Centre of Shenzhen, Shenzhen 518114, China

### **Abstract**

A new species of *Paphiopedilum* (Orchidaceae) from Yunnan, China, is described and illustrated based on morphological and molecular evidence. Morphological comparisons indicate that the new species *P. notatisepalum* is highly similar to *P. henryanum*, from which it differs by its leaves with large yellow spots, shorter scape, larger flower, ovate, white sepals and petals that are pale purple-red with large purple spots and yellow-white margins. Molecular analyses of combined nuclear and plastid datasets (nrITS and *matK*) indicate that *P. notatisepalum* is sister to *P. barbigerum*, which has a green leaves and pale yellow-green sepals and petals. The morphological and molecular evidence support the hypothesis that *P. notatisepalum* is a new species.

**Key words:** Asian orchids, orchid phylogenetics, Venus slipper, reticulate evolution, lady's slipper orchids

*Paphiopedilum* Pfitzer (1886: 11), the largest genus of the subfamily Cypripedioideae (slipper orchids) comprising 96 accepted species (data collected from KBG, 01/2014), is native to the subtropical and tropical regions of Southeast Asia and is an ideal group for investigating the evolution of island species diversity (Liu *et al.*, 2009). Monophyly of the genus as it is currently circumscribed has been strongly supported by previous studies (Cox *et al.* 1997; Chochai *et al.* 2012; Guo *et al.* 2012). Chochai *et al.* (2012) studied phylogenetic relationships in the genus with nuclear ribosomal spacers (nrITS) and four plastid DNA regions and obtained good resolution. However, nrITS and plastid DNA trees showed some discordance in topology, and Guo *et al.* (2015) found some evidence that reticulation exists in this genus.

During botanical trips to Malipo in Yunnan, China, in 2015 and 2016 several populations of *Paphiopedilum* were found in a broad-leaved forest on several limestone mountains. The dorsal sepal has recurved margins, leaves of these plants have large yellow spots, sepals are white and pale purple-red petals have large purple spots, somewhat similar to *P. henryanum* Braem (1987: 4). Although the new entity has obvious differences from species similar in morphology, whether there is a similar difference at the molecular level as estimated by phylogenetic markers was considered worthy of study.

### **Material and methods**

**Macromorphology observation:**—Specimens were deposited in the National Orchid Conservation Center herbarium (NOCC). Measurements, colours and other details given in the description are based on the examination of living material. The floral structure of the fully opened flowers was observed using a Leica M205A microscope (Leica Microsystems Ltd., Heerbrugg, Germany).

**Sampling:**—Fresh leaves of this putatively new entity were collected. All sampled plants were transplanted to the National Orchid Conservation Center of China (Shenzhen, China). The sequences of some allied species and outgroup species were available from GenBank. Sample information and vouchers are provided in Table 1.

**TABLE 1.** Species and DNA regions sequenced for analysis, as well as GenBank accession numbers. A dash (–) indicates missing data, an asterisk (\*) denotes sequences obtained in this study, and the remaining sequences are from GenBank.

Species	ITS	matK
<b>Sect. <i>Parvisepalum</i></b>		
<i>Paphiopedilum armeniacum</i> S.C.Chen & F.Y.Liu	EF156086	JQ660906
<i>Paphiopedilum hangianum</i> Perner & O.Gruss	JX088558	KP311998
<b>Sect. <i>Concoloria</i></b>		
<i>Paphiopedilum bellatulum</i> (Rchb.f.) Stein	JX088553	JN181448
<i>Paphiopedilum niveum</i> (Rchb.f.) Stein	JQ660879	KC692139
<b>Sect. <i>Cochlopetalum</i></b>		
<i>Paphiopedilum glaucophyllum</i> J.J.Sm.	JQ929321	AY557205
<i>Paphiopedilum liemianum</i> (Fowlie) K.Karas. & K.Saito	JQ929333	JQ929385
<i>Paphiopedilum primulinum</i> M.W.Wood & P.Taylor	JQ929342	JN181451
<i>Paphiopedilum victoria-mariae</i> (Sander ex Mast.) Rolfe	EF156156	KP312031
<i>Paphiopedilum victoria-regina</i> (Sander) M.W.Wood	AY643441	JQ660893
<b>Sect. <i>Pardalopetalum</i></b>		
<i>Paphiopedilum haynaldianum</i> (Rchb.f.) Stein	JQ929325	JQ929379
<i>Paphiopedilum parishii</i> (Rchb.f.) Stein	JQ929340	JQ660891
<b>Sect. <i>Coryopedilum</i></b>		
<i>Paphiopedilum adductum</i> Asher	JQ929305	JQ182191
<i>Paphiopedilum gigantifolium</i> Braem, M.L.Baker & C.O.Baker	EF156103	KP312011
<i>Paphiopedilum glanduliferum</i> (Blume) Stein	JQ929319	JQ660887
<i>Paphiopedilum kolopakingii</i> Fowlie	JQ929331	JQ929383
<i>Paphiopedilum philippinense</i> (Rchb.f.) Stein	JQ929341	JQ929393
<i>Paphiopedilum praestans</i> (Rchb.f.) Pfitzer	AY643452	JQ660886
<i>Paphiopedilum randsii</i> Fowlie	EF156132	JQ929396
<i>Paphiopedilum rothschildianum</i> (Rchb.f.) Stein	JQ660865	JQ660888
<i>Paphiopedilum stonei</i> (Hook.) Stein	EF156146	JQ660889
<b>Sect. <i>Paphiopedilum</i></b>		
<i>Paphiopedilum barbigerum</i> Tang & F.T.Wang	AY643442	KP312035
<i>Paphiopedilum charlesworthii</i> (Rolfe) Pfitzer	JX088552	JQ929365
<i>Paphiopedilum druryi</i> (Bedd.) Stein	JQ929316	JQ660894
<i>Paphiopedilum exul</i> (Ridl.) Rolfe	EF156101	JQ929371
<i>Paphiopedilum guangdongense</i> Z.J.Liu & L.J.Chen	FJ899752	KP312085
<i>Paphiopedilum gratrixianum</i> Rolfe	FJ899753	JQ929377
<i>Paphiopedilum henryanum</i> Braem	JX088551	KP312047
<i>Paphiopedilum hirsutissimum</i> (Lindl. ex Hook.) Stein	HQ998459	JN181449
<i>Paphiopedilum insigne</i> (Wall. ex Lindl.) Pfitzer	JQ660874	JQ660898
<i>Paphiopedilum spicerianum</i> (Rchb.f.) Pfitzer	JQ929347	JQ929399
<i>Paphiopedilum stenolomum</i> Z.J.Liu, O.Gruss & L.J.Chen	-	KP312090
<i>Paphiopedilum tigrinum</i> Koop. & N.Haseg.	JQ929351	KP312055
<i>Paphiopedilum tranlienianum</i> O.Gruss & Perner	EF156151	KP312056
<i>Paphiopedilum villosum</i> (Lindl.) Stein	JQ660875	JQ660899
<b>Sect. <i>Barbata</i></b>		
<i>Paphiopedilum acmodontum</i> M.W.Wood	EF156081	KP312058
<i>Paphiopedilum appletonianum</i> (Gower) Rolfe	EF156084	KC692116
<i>Paphiopedilum argus</i> (Rchb.f.) Stein	AJ564363	JQ660896
<i>Paphiopedilum barbatum</i> (Lindl.) Pfitzer	JQ660872	KC692121
<i>Paphiopedilum bullenianum</i> (Rchb.f.) Pfitzer	KC692109	KC692141
<i>Paphiopedilum callosum</i> (Rchb.f.) Stein	JQ929308	KC692131
<i>Paphiopedilum ciliolare</i> (Rchb.f.) Stein	JQ929311	GU120221
<i>Paphiopedilum hennisianum</i> (M.W.Wood) Fowlie	JQ929326	JQ929380
<i>Paphiopedilum javanicum</i> (Reinw. ex Lindl.) Pfitzer	EF156120	GU120220
<i>Paphiopedilum lawrenceanum</i> (Rchb.f.) Pfitzer	EF156122	JQ929384
<i>Paphiopedilum purpuratum</i> (Lindl.) Stein	AJ564364	KP312072
<i>Paphiopedilum schoseri</i> Braem & H.Mohr	AY643462	GU120214
<i>Paphiopedilum sugiyamanum</i> Cavestro	GU120205	GU120215
<i>Paphiopedilum sukhakulii</i> Schoser & Senghas	JQ929349	JQ929401
<i>Paphiopedilum superbiens</i> (Rchb.f.) Stein	EF156148	JQ660897
<i>Paphiopedilum tonsum</i> (Rchb.f.) Stein	EF156150	GU120216
<i>Paphiopedilum venustum</i> (Wall. ex Sims) Pfitzer	HQ998472	HQ998513
<i>Paphiopedilum violascens</i> Schltr.	EF156160	JQ929406
<i>Paphiopedilum wardii</i> Summerh.	JX088546	JN181450
<i>Paphiopedilum notatisepalum</i> Z.J.Liu, M.Wang & S.R.Lan	KY662379*	KY662380*

**DNA extraction:**—For each sample, genomic DNA was isolated from 0.2 g silica gel-dried or 0.4 g fresh leaves using a modified cetyltrimethylammonium bromide (CTAB) method (Doyle & Doyle, 1987) with 4% CTAB instead of 2%. Leaf tissue was ground in liquid nitrogen before adding the CTAB buffer.

**Sequence comparisons and phylogenetic analysis:**—Amplification, sequencing and data analysis were performed according to Zhang *et al.* (2013). Two markers (nrITS DNA and plastid *matK*) were used in this study. Primer information is listed in Li *et al.* (2014). Sequences for the newly identified species have been deposited in GenBank (Table 1). The matrices include nrITS alone, *matK* alone and all data combined. Data analyses including maximum parsimony (MP), Bayesian inference (BI) and maximum likelihood (ML) methods were performed as previously described by Li *et al.* (2016).

## Results

**Morphological analysis:**—A detailed comparison between the new species and other similar species in *Paphiopedilum* was made (Table 2). Morphological comparisons indicate that new species *P. notatisepalum* is most similar to *P. henryanum*, from which it differs by its leaves with large yellow spots, shorter scape, larger flower, ovate white sepals, and light purple-red petals with large purple spots and yellow-white margins (Fig. 1). There are also features that distinguish the new species from all other described *Paphiopedilum* species.

**Phylogenetic analysis:**—The length of the nrITS aligned matrix was 777 bp, of which 106 were variable and 99 were potentially parsimony-informative. For *matK*, the aligned matrix was 814 bp, of which 39 (4.79%) were variable and 33 (4.10%) were potentially parsimony-informative. Detailed information for each dataset is provided in Table 3.

The illustrated tree (Fig. 2) is the ML tree but it displays the results of the analyses of the combined data from the ML, MP and Bayesian analyses (BB<sub>ML</sub>, BB<sub>MP</sub> and PP, respectively). The general phylogenetic relationships indicated in this study are consistent with those in Chochai *et al.* (2012) and Guo *et al.* (2015). The newly identified species, *Paphiopedilum notatisepalum*, is sister to *P. barbigerum* Tang & Wang (1940: 23) in the analyses of nrITS and combined nrITS plus *matK* (Fig. 2), which has a green leaves and pale yellow-green sepals and petals. Given the isolated position of *P. notatisepalum* and the morphological differences, it is appropriate that it be treated as a new species. Support for the position of the new species is weak, and phylogenetic placements were not resolved in *matK*, so it cannot be excluded that it is instead sister to *P. henryanum*.

**TABLE 2.** Comparison of diagnostic characteristics for *P. notatisepalum*, *P. henryanum* and *P. barbigerum*.

Characteristics	<i>P. notatisepalum</i>	<i>P. henryanum</i>	<i>P. barbigerum</i>
Leaf color	Green with large yellow spots	Deep green with narrow yellow-white margins	Deep green
Scape	8–10 cm long, green, densely purple-pubescent	14–17 cm long, green to brownish-green, with brown-purple-pubescent	10–16 cm long, brownish-green, densely covered with purple-brown hairs
Flower	7.5–8.2 cm across	6.0–7.0 cm across	6.0–7.0 cm across
Dorsal sepal	Ovate, 3.5–3.8 × 2.3–2.7 cm, white with large purple spots	Suborbicular-ovate, 3.0–3.5 × 3.2–3.8 cm, pale yellow-green, with large purple-brown spots	Suborbicular, 2.8–3.8 × 3.6–3.8 cm, white with green-brown centrally at basal half
Synsepal	Narrowly ovate-elliptic, 3.0–3.3 × 1.7–2.0 cm, white with purple spots	Elliptic-ovate, 2.5–3.0 × 1.4–1.8 cm, pale-yellow-green	Elliptic, 2.5–3.3 × 1.4–2.0 cm, pale yellow-green
Petal	Narrowly obovate-oblong, 4.0–4.3 × 1.4–1.6 cm, light purple-red with large purple spots, undulate- and recurved margins	Narrowly obovate, 3.2–3.8 × 1.4–1.8 cm, pink-purple, with purple spots in basal half, undulate margins	Narrowly oblong, 3.0–4.0 × 1.4–2.0 cm, pale brown with deeper veins, undulate margins
Lip	Pouch ellipsoid, 3.5–4.0 × 1.9–2.2 cm, pale purple-red	Pouch ellipsoid, 2.3–2.8 × 2.2–2.5 cm, pink-purple	Ellipsoid-ovoid, 2.0–2.5 × 1.5–2.0 cm, pale brown
Staminode	Obovate, 8–9 × 6–7 mm	Obcordate, 7–9 × 7–8 mm	Obovate-obcordate, 7–10 × 8–10 mm

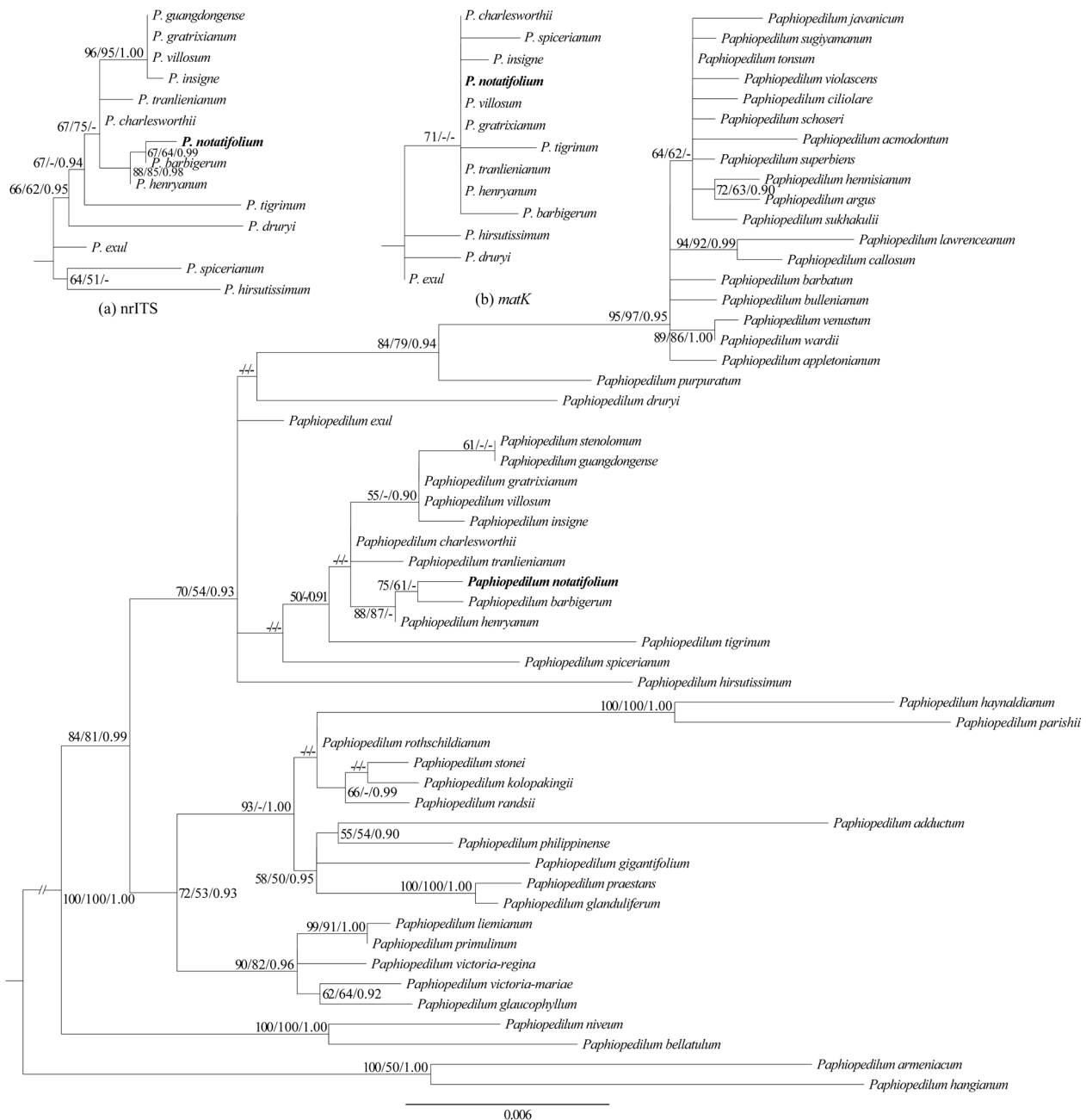
**TABLE 3.** Statistics from the analyses.

DNA region	No. of taxa	Aligned length	No. variable characters	No. informative characters (%)	Tree length	Consistency index	Retention index
ITS	53	777	106	99 (12.74)	275	0.83	0.90
<i>matK</i>	54	814	39	33 (4.10)	83	0.90	0.95
Combined	54	1591	145	132 (8.30)	370	0.82	0.90



**FIGURE 1.** *Paphiopedilum notatisepalum* and its allies. A. *Paphiopedilum notatisepalum*. B. *Paphiopedilum barbigerum*. C. *Paphiopedilum henryanum*.





**FIGURE 2.** Phylogenetic tree for selected species of *Paphiopedilum* constructed with a combined matrix of nrITS and plastid *matK*. Analysis of subgen. *Paphiopedilum* based on separate nrITS (a) and plastid *matK* (b) data are shown in the top left corner. The ML tree is illustrated. Numbers near the nodes are bootstrap percentages and Bayesian posterior probabilities (BS<sub>ML</sub>, BS<sub>MP</sub>, PP). A dash (–) indicates a node has less than 50 percent bootstrap or 0.90 Bayesian posterior probability.

## Discussion

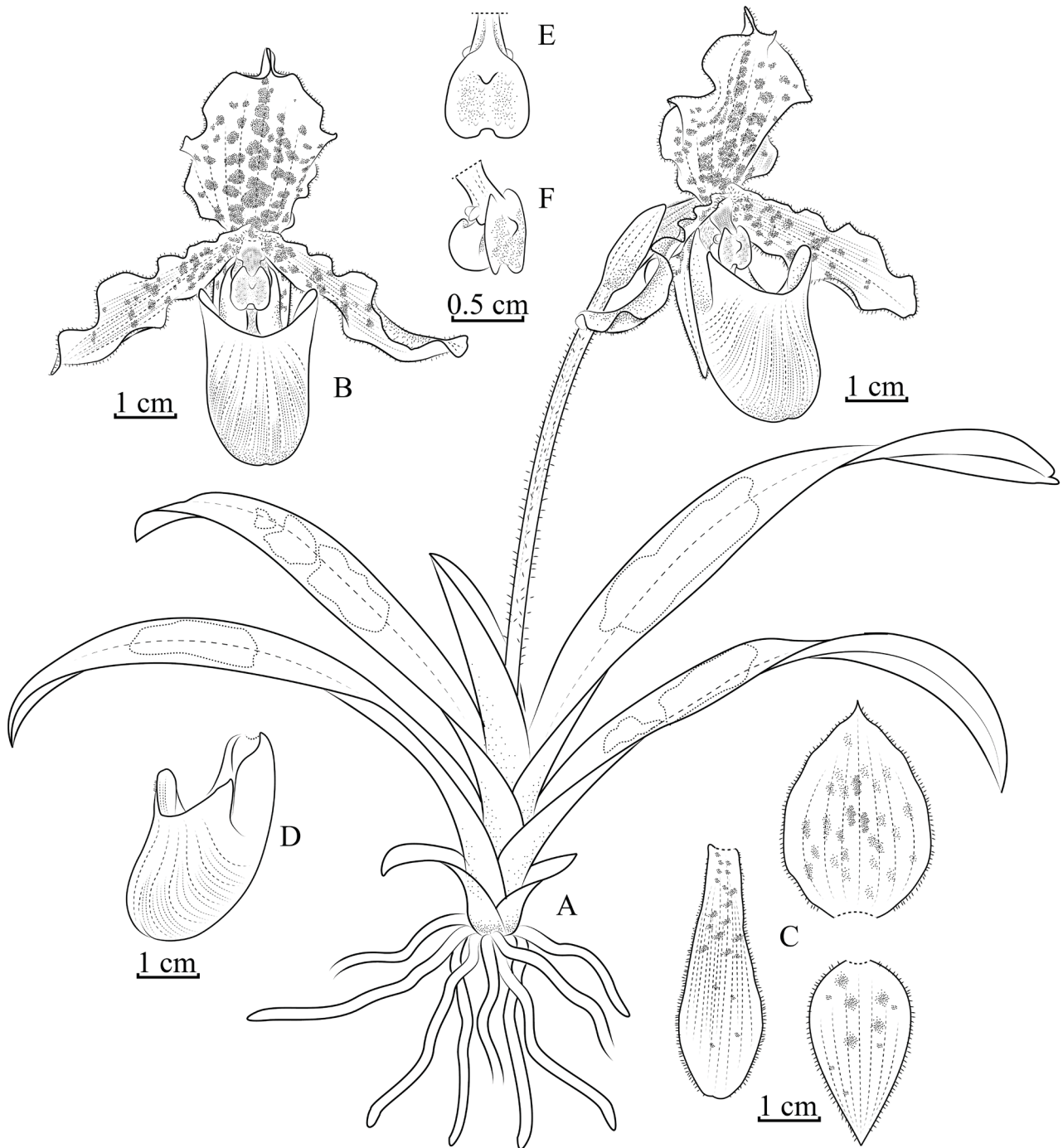
*Paphiopedilum notatisepalum* belongs to subg. *Paphiopedilum* sect. *Paphiopedilum* based on its helmet-shaped lip, single-flowered inflorescence and uniformly green leaves occasionally with deep green venation adaxially. However, *P. notatisepalum* is different from all species in this genus in that the leaves have large yellow spots, which corresponds with other characters including a larger flower with white sepal and pink petals with large and small purple-red spots. The characters of the new species are stable in the all individuals from three populations at different sites, 20 individuals of which were transplanted in The National Orchid Conservation Center of China (NOCC). In particular, the yellow spots remain in the plants in cultivation, indicating that these are not due to lack of minerals and do have a genetic basis. The new species is described based on these 20 individuals and illustrated from on the holotype. In

the phylogenetic analysis, the new species is sister to *P. barbigerum* with a only weak support in the analysis of nrITS and combined nrITS plus *matK*, and the phylogenetic placements were not resolved in *matK*. It is also possible that *P. notatisepalum* could be a natural hybrid species between *P. barbigerum* and *P. henryanum*, a subject that needs further study. In particular, a population genetic study of this putative species complex needs to be undertaken. Use of phylogenetic markers with a single individual of each species could provide misleading results.

### Taxonomic treatment

*Paphiopedilum notatisepalum* Z. J. Liu, M. Wang & S. R. Lan *sp. nov.* (Figs 3, 4) (紫斑兜兰)

Type:—CHINA. Yunnan (云南): Malipo (麻栗坡), in crevices of shady cliffs or rocks of limestone, 1300 m, 8 Oct. 2016, Liu 9349 (holotype: NOCC).



**FIGURE 3.** *Paphiopedilum notatisepalum* Z.J.Liu, M.Wang & S.R.Lan. A. Flowering plant. B. Flower, front view. C. Dorsal sepal, petal, and synsepal. D. Lip, side view. E. Staminode, front view. F. Column, side view. Drawn by L. J. Chen from Liu 9349 (holotype).



**FIGURE 4.** *Paphiopedilum notatisepalum* Z.J.Liu, M.Wang & S.R.Lan. A. Flowering plant. B. Flower, front view. C. Flower, back view. D. Staminate, front view. E., F. Flowers, side view.

This new species is morphologically similar to *Paphiopedilum henryanum*, from which it differs by the smaller plants with large yellow spots on the leaves, shorter scape, larger flower, white and narrower sepal and light purple-red petals with larger purple spots and yellow-white margins.

Lithophytic herbs. Leaves 3–5, narrowly oblong, 8.0–17.0 × 1.2–2.0 cm, apex unequally bilobulate, minutely tridenticulate, deep green, with large yellow spots and purple markings at the base. Inflorescence arching, 8–10 cm long, green, densely purple-pubescent, terminally 1-flowered; floral bract ovate, pale green, with small purple spots, 3.0–3.5 × 1.5–2.0 cm; pedicel and ovary 3.3–4.0 cm long, green, densely purple-pubescent; flower 7.5–8.2 cm in diameter; dorsal sepal white with large purple spots; synsepal white with purple spots; petals pale purple-red with large purple spots and yellow-white margins; lip pale purple-red with yellow-white margins; staminode pale purple with brownish-yellow margins and a yellow umbo; dorsal sepal ovate, 3.5–3.8 × 2.4–2.7 cm margins minutely ciliate, recurved; synsepal narrowly ovate-elliptic, 3.0–3.3 × 1.7–2.0 cm, minutely ciliate, apex bilobulate; petals narrowly obovate-oblong, 4.0–4.3 × 1.4–1.6 cm long, margins undulate and recurved, obscurely tridenticulate apically, minutely ciliate, with long hairs at base; lip helmet-shaped; pouch ellipsoid, 3.5–4.0 × 1.9–2.2 cm, opening slightly auriculate on both sides; staminode obovate, 8–9 × 6–7 mm, papillose, with a small umbo adaxially, apex emarginate.

**Flowering period:**—September–November.

**Distribution and habitat:**—In crevices of shady cliffs or rocks in evergreen broad-leaved forests in limestone areas in southeastern Yunnan, China.

**Etymology:**—The species name *notatisepalum* refers to purple-maroon-spotted sepals, from the Greek *notati* (spot) and *sepalum* (sepal).

**Conservation status:**—Using the World Conservation Union Red List Categories and Criteria (IUCN, 2012), *P. notatisepalum* should be treated as critically endangered.

## Acknowledgements

This project was financially supported by the Science & Technology Project of Guangdong Province, China (Grant No. 2004B26001070). We cordially thank Li-Jun Chen, Wen-Hui Rao, Xu-Hui Chen, Wei-Rong Liu, Xin-Yi Wu, Yan-Yan Guo, Yu-Yun Zheng, and Pei-Wen Zhang for their kind help during the preparation of this article.

## References

- Braem, G. J. (1987) *Paphiopedilum henryanum*, a new species from Indochina. *Schlecteriana* 1: 3–6.
- Chochai, A., Leitch, I.J., Ingrouille, M.J. & Fay, M.F. (2012) Molecular phylogenetics of *Paphiopedilum* (Cypripedioideae; Orchidaceae) based on nuclear ribosomal ITS and plastid sequences. *Botanical Journal of the Linnean Society* 170: 176–196.  
<https://doi.org/10.1111/j.1095-8339.2012.01293.x>
- Cox, A.V., Pridgeon, A.M., Albert, V.A. & Chase, M.W. (1997) Phylogeny of the slipper orchids (Cypripedioideae: Orchidaceae): nuclear rDNA ITS sequences. *Plant Systematics and Evolution* 208: 197–223.  
<https://doi.org/10.1007/BF00985442>
- Doyle, J.J. & Doyle, J.L. (1987) A rapid DNA isolation procedure for small quantities of fresh leaf tissue. *Phytochemical Bulletin* 19: 11–15.
- Guo, Y.Y., Luo, Y.B., Liu, Z.J. & Wang, X.Q. (2012) Evolution and biogeography of the slipper orchids: Eocene vicariance of the conduplicate genera in the Old and New World tropics. *PLoS ONE* 7: e38788.  
<https://doi.org/10.1371/journal.pone.0038788>
- Guo, Y.Y., Luo, Y.B., Liu, Z.J. & Wang, X.Q. (2015) Reticulate evolution and sea-level fluctuations together drove species diversification of slipper orchids (*Paphiopedilum*) in Southeast Asia. *Molecular Ecology* 24: 2838–2855.  
<https://doi.org/10.1111/mec.13189>
- Liu, Z.J., Chen, S.C., Chen, L.J. & Lei, S.P. (2009) *The genus Paphiopedilum in China*. Science Press, Beijing, 10 pp.
- Li, M.H., Zhang, G.Q., Liu, Z.J. & Lan, S.R. (2014) Revision of *Hygrochilus* (Orchidaceae: Epidendroideae: Aeridinae) and a molecular phylogenetic analysis. *Phytotaxa* 159: 256–268.  
<https://doi.org/10.11646/phytotaxa.159.4.2>
- Li, M.H., Zhang, G.Q., Liu, Z.J. & Lan, S.R. (2016) Subtribal relationships in Cymbidieae (Epidendroideae, Orchidaceae) reveal a new subtribe, Dipodiinae, based on plastid and nuclear coding DNA. *Phytotaxa* 246: 37–48.



<https://doi.org/10.11646/phytotaxa.246.1.3>

IUCN. (2012) *IUCN red list categories and criteria, version 3.1*. Second edition. Gland and Cambridge, 32 pp.

Pfitzer, E.H. (1886) *Morphologische Studien über die Orchideenblüthe*. Winter, Heidelberg, 11 pp.

Tang, T. & Wang, F.T. (1940) Contributions to the knowledge of eastern Asiatic Orchidaceae I. *Bulletin of the Fan Memorial Institute of Biology* 10: 23–46.

Zhang, G.Q., Liu, K.W., Chen, L.J., Xiao, X.J., Zhai, J.W., Li, L.Q., Cai, J., Hsiao, Y.Y., Rao, W.H., Huang, J., Ma, X.Y., Chung, S.W., Huang, L.Q., Tsai, W.C. & Liu, Z.J. (2013) A new molecular phylogeny and a new genus, *Pendulorchis*, of the *Aerides–Vanda* alliance (Orchidaceae: Epidendroideae). *PLoS ONE* e60097.

<https://doi.org/10.1371/journal.pone.0060097>